

service instruction

Antenna MIMO LTE 14 hv

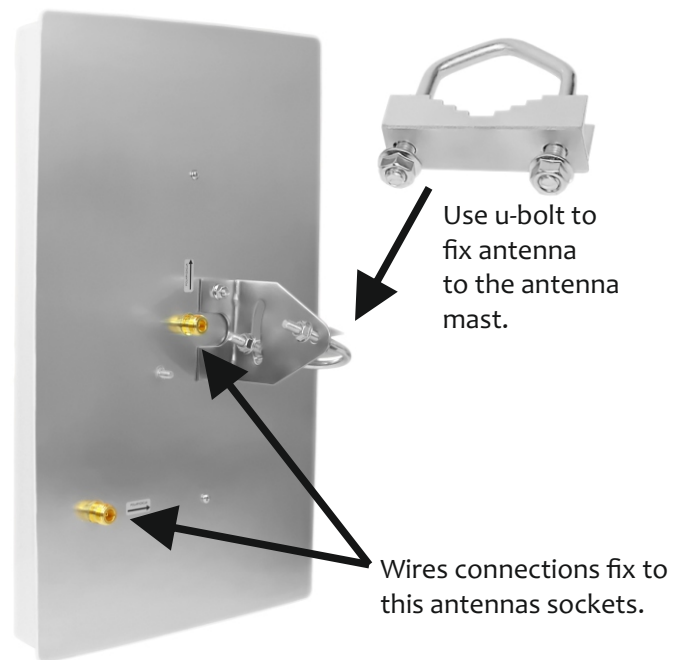


Use of an Antenna

The antenna has been specially designed for Internet access services in the network 5G and check for GSM operators around the world.

Technical specification

| | |
|---|---|
| gain | 2x14dBi 1800-2600 and 2x10dBi 800-900mhz |
| operating frequency | 800 - 2600 MHz |
| Radiation angle in the vertical plane | 25 |
| Radiation angle in the horizontal plane | 30 |
| Polarization | horizontal / vertical |
| VSWR | 1.6 |
| Impedance | 50 Ohm |
| Connector | 2x N (slot N) |
| Resistance to wind | 200km/h |



Instruction

Choose the best place for the antenna. Place for antenna must have the highest network range.

Remember:

- signal level is growing with setting high position antenna.
- the antenna must be installed outside: wall, chimney, antenna mast.
- signal level is higher when placing the antenna from the base station side.

Cable connectors should be fixed in antenna sockets located in the antenna case.

Then connect the antenna to the modem. Both cable connectors must be carefully fixed in the modem antenna sockets.

To measure the signal, it is best to find the meter showing the signal in the device software in decibels (dBm), such a program should be downloaded from the web.

The polarization plugs (vertical and horizontal) must be connected in accordance with the instructions supplied with the device.

If the device has no markings, we choose the correct plug connection ourselves.

If the signal level is unsatisfactory for both configurations, move the antenna to another location and repeat the procedure with the replacement of the plugs.